

NOTICE: WHEN GOVERNMENT DRAWINGS, SPECIFICATIONS, OR OTHER DATA ARE USED FOR ANY PURPOSE OTHER THAN IN CONNECTION WITH A DEFINITELY RELATED GOVERNMENT PROCUREMENT OPERATION, THE UNITED STATES GOVERNMENT THEREBY INCURS NO RESPONSIBILITY FOR ANY OBLIGATION WHATSOEVER; AND THE FACT THAT THE GOVERNMENT MAY HAVE FORMULATED, FURNISHED, OR IN ANY WAY SUPPLIED THE SAID DRAWINGS, SPECIFICATIONS, OR OTHER DATA IS NOT TO BE REGARDED BY IMPLICATION OR OTHERWISE AS IN ANY MANNER LICENSING THE HOLDER OR ANY OTHER PERSON OR CORPORATION, OR CONVEYING ANY RIGHTS OR PERMISSION TO MANUFACTURE, USE, OR SELL ANY PATENTED INVENTION THAT MAY IN ANY WAY BE RELATED THERETO.

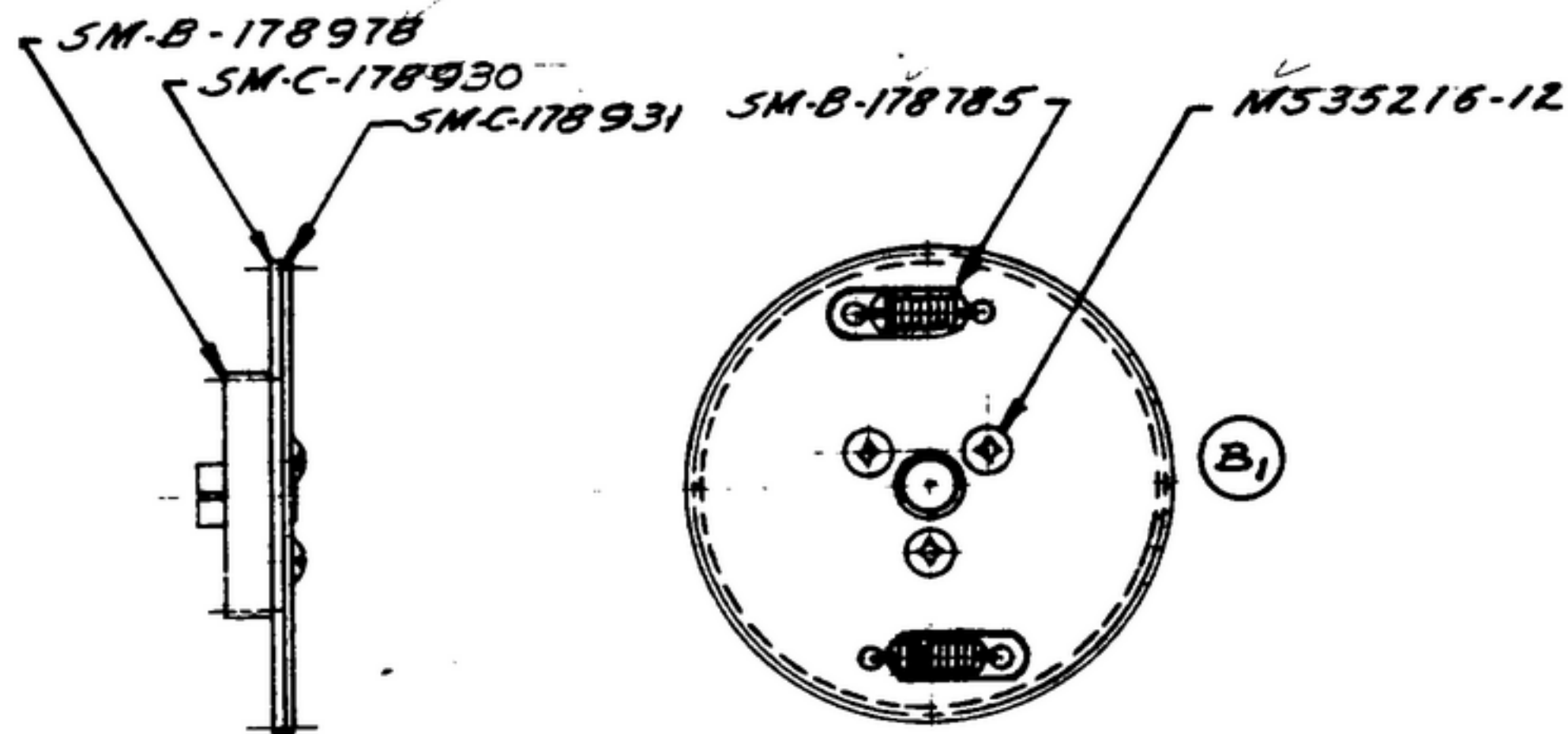
NOTE:

*FOR INFORMATION ONLY, CONTRACTOR MAY AT HIS OPTION DEVIATE FROM THESE PROCESS DETAILS

~~SWE APPROVAL~~

REVISIONS

SYM	PR10042-3	SYM	DESCRIPTION	DATE	APPROV
		A ₃	A ₁ -NOTE 2 "GLYPTOL" WAS VARNISH 7526; A ₂ -ADDED GLYPTOL TO LIST OF MAT'L. A ₃ -ADDED APPL. SM-D-343600, SM-D-248975, SC-DL-248775.	6 OCT. 59	42428-89-A REV
B	CA. #84921	B	(1)-CORRECTED PICTORIALY	24 OCT. 60	42428- REV PH



NOTES:

- 1-SM-C-178930 MUST ROTATE FREELY WITHIN LIMITS OF SPRINGS WITHOUT BINDING.
- (A₁) 2-LIQUID STAKE M535216-12 WITH GLYPTOL CV903 AS SUPPLIED BY GENERAL ELECTRIC CORP., SCHENECTADY, N.Y., OR EQUAL.
- 3-ALL THREADS SHALL BE IN ACCORDANCE WITH SCREWTHREAD STANDARDS FOR FEDERAL SERVICE HANDBOOK H-28.

QTY	REQ'D.	MAT'L	DESCRIPTION
3		GLYPTOL	M535216-12 SCREW
1			SM-B-178978 HUB ASSY
1			SM-C-178931 GEAR
1			SM-C-178930 GEAR
2			SM-B-178785 SPRING

SWE. PART NO.	REQD	PART NO.	DESCRIPTION	MATL	MATL SPEC
---------------	------	----------	-------------	------	-----------

LIST OF MATERIAL

<p>(A₃)</p> <p>SM-D-343600</p> <p>SM-D-248975 SC-DL-248775</p> <p>SM-D-178900 SC-DL-178467</p> <p>NEXT ASSY</p> <p>USED ON</p> <p>APPLICATION</p>	UNLESS OTHERWISE SPECIFIED	AUTHENTICATION	<p>SIGNAL CORPS ENGINEERING LABORATORIES</p> <p>PORT MONMOUTH NEW JERSEY</p> <p>SM-B-178978</p>
	DIMENSIONS ARE IN INCHES	DRAWN 21052-PA	
	TOLERANCES ON FRACTIONS DECIMALS ANGLES	TRACED PHOTO	
		CHECKED [Signature]	
		VERIFIED P.D.B.R.	
		APPROVED P.D.B.R.	
		REVIEWED P.M.E.	
		DATE 30-OCT-1959	SCALE 1/1

WHEN REFERRING TO THIS DRAWING STATE DRAWING NO., APPLICABLE ISSUE SYMBOL, IF ANY, AND DA